



St Catherines Court, London, W4 1UH

£500,000

WHITMAN & CO.

SALES · LETTINGS · COMMERCIAL

- Bedford Park Conservation Area
- Two bedrooms
- Communal gardens
- Close to shops, cafes and restaurants
- Top floor with westerly aspect
- No chain

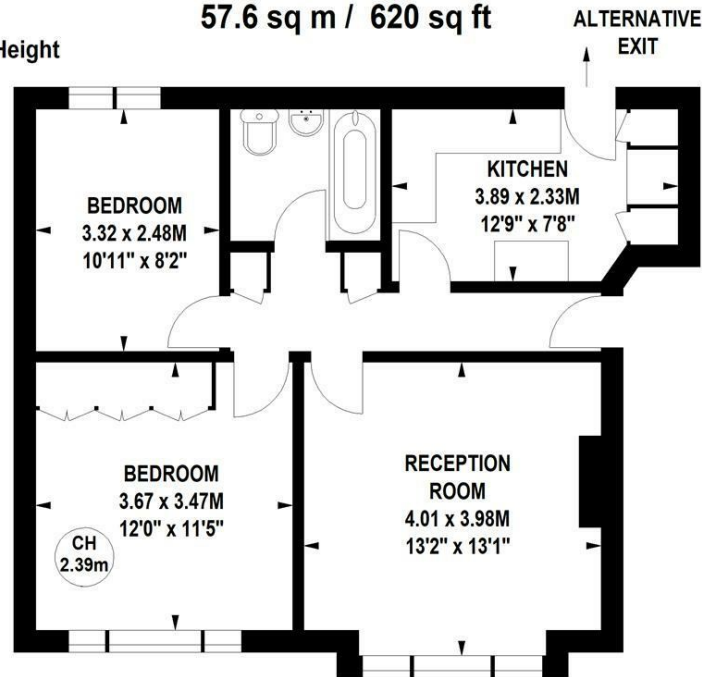
Tenure - Leasehold with share of freehold
 Lease Length - 950+ Years remaining
 Ground rent - Peppercorn
 Service Charge inc. Reserve Fund - £3886 pa
 Local Authority - Ealing
 Council Tax - Band D

St Catherine's Court, W4

Approximate gross internal area

57.6 sq m / 620 sq ft

Key :
CH - Ceiling Height



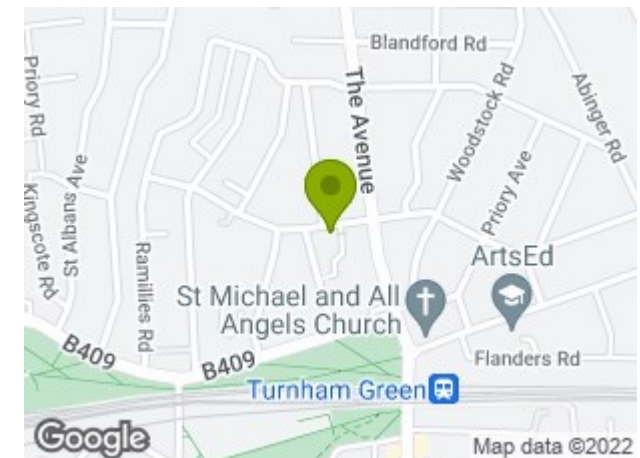
Third Floor

Not to scale, for guidance only and must not be relied upon as a statement of fact.
 All measurements and areas are approximate only

THE PROPERTY

A well-presented two-bedroom, purpose built, top floor, flat ideally located in the Bedford Park Conservation Area offering close proximity to all amenities. This bright, westerly aspect, flat comprises two bedrooms, a 13' reception room, fully fitted kitchen/breakfast room, luxury bathroom, rear access to communal gardens and a 950+ year lease with share of freehold with the added benefit of communal hot water and central heating. Situated within close proximity of Turnham Green tube station and the extensive shopping, bar and restaurant facilities of Chiswick High Road. No chain.

SITUATION



5-7 Turnham Green Terrace, Chiswick, London, W4 1RG

Tel 020 8747 8800

E-mail sales@whitmanandco.com

Website www.whitmanandco.com